

## CW 1308

### Description

#### Application

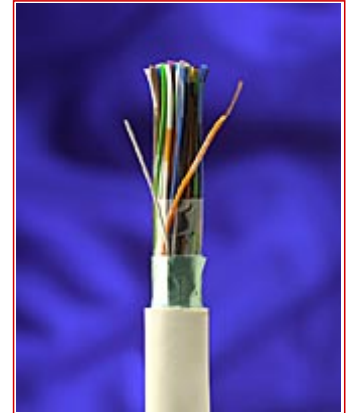
This range of cables was primarily designed for the interconnection of telephone equipment which is installed indoors. In addition these cables may be used for interconnection of other communication and control equipment or low level signalling applications.

#### Description

- Solid plain annealed copper wire 0.5mm
- PVC insulation
- Conductors bunched into pairs
- Pairs laid up in concentric layers or in units
- Manufacture identification yarn
- PET foil
- Drainwire 0.5 tinned copper wire (for screened version)
- Alupet screen (for screened version)
- Ripcord
- PVC WHITE outer sheath

#### Installation

- In houses and industries
- No ground and no open air laying
- No cable channels
- Only fixed installation

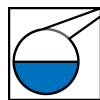


#### Standards

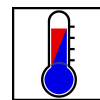
**National** BTS CW 1308



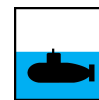
Conductor flexibility  
Solid



Chemical resistance  
Negligible



Operating temp. range  
-5 .. 70 °C



Water proof  
Temporary

## CW 1308

### Characteristics

Construction characteristics	
Conductor material	Bare annealed copper
Conductor flexibility	Solid
Insulation	PVC
Screen	ALU/PET screening foil
Outer sheath	PVC
Sheath colour	White
Dimensional characteristics	
Conductor diameter	0.5 mm
Diameter over insulation	0.84 mm
Electrical characteristics	
Max. DC resistance of the conductor at 20°C	97.8 Ohm/km
Minimum insulation resistance	50 MOhm.km
Dielectric strength core to core DC, min.	1.0 kV
Capacitance unbalance max.	500 pF/500m
Usage characteristics	
Chemical resistance	Negligible
Operating temperature, range	-5 .. 70 °C
Resistance to vibrations	No
Water proof	Temporary
Field of application	Indoor

### Product List

☎=Make to order, 🏠=Make to stock

Nexans ref.	Name	nb pairs
☎ 10019953	CW1308 1P0.5B WH UNIT100	1
☎ 10020391	CW 1308 1P0.5B WH UNIT500	1
☎ 10019954	CW1308 2P0.5B WH UNIT100	2
☎ 10020693	CW1308 2P0.5B WH UNIT500	2
☎ 10019955	CW1308 3P0.5B WH UNIT100	3
☎ 10020015	CW1308 3P0.5B WH UNIT500	3
☎ 10020044	CW1308 4P0.5B WH UNIT100	4
☎ 10020696	CW1308 4P0.5B WH UNIT500	4
☎ 10020045	CW1308 6P0.5B WH UNIT100	6
☎ 10023182	CW1308 6P0.5B WH UNIT500	6
☎ 10020016	CW1308 10P0.5B WH UNIT100	10
☎ 10020697	CW1308 10P0.5B WH UNIT500	10
☎ 10020377	CW1308 12P0.5B WH UNIT100	12
☎ 10020698	CW1308 12P0.5B WH UNIT500	12
☎ 10020378	CW1308 20P0.5B+A WH UNIT100	20
☎ 10020699	CW1308 20P0.5B+A WH UNIT500	20
☎ 10023183	CW1308 25P0.5B+SCR WH B500	25
☎ 10044909	CW1308 25P0.5B+SCR WH B1000	25
☎ 10051036	CW1308 25P0.5B+SCR WH B2010	25

☎ = Make to order, 🏠 = Make to stock

## CW 1308

Nexans ref.	Name	nb pairs
☎ 10061639	CW1308 25P0.5B+SCR WH B4000	25
☎ 10074505	CW 1308 32P0.5B 2523U WH B2000	32
☎ 10051528	CW1308 50P0.5B+A 2550E WH B1000	50
☎ 10061921	CW 1308 4X(24P0.5B+SCR) WH B1000	96
☎ 10050111	CW1308 100P0.5B+A 2581E WH B1000	100
☎ 10063795	CW 1308 4X(25P0.5B+SCR) WH B2000	100
☎ 10064842	CW 1308 4X(25P0.5B+SCR) WH B1000	100

☎ = Make to order, 🏠 = Make to stock